

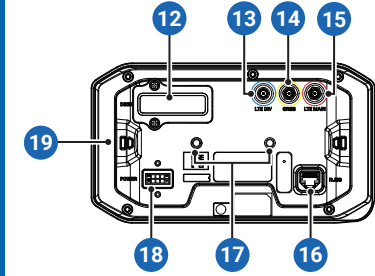
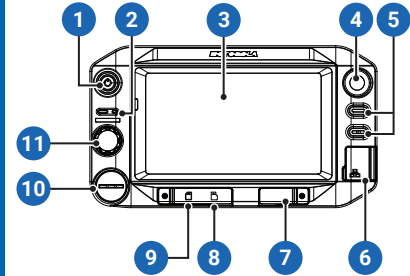
# MXM7000 INTL

## QUICK START GUIDE

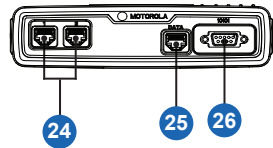
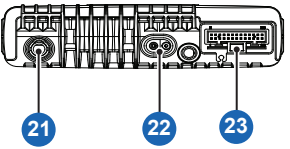
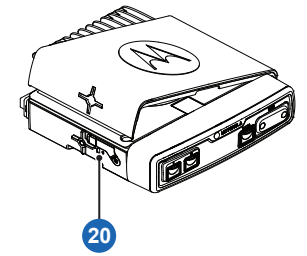


### Knowing Your Radio

www.motorolasolutions.com



- 1 Power Button and Screen Lock/Unlock
- 2 TETRA and LTE LEDs
- 3 TouchScreen Display
- 4 Emergency Button
- 5 Programmable Buttons
- 6 RJ45 Connector
- 7 USB-A Port
- 8 Micro SD Card Slot
- 9 LTE SIM Card Slot
- 10 GCAI MMP Dust Cover
- 11 Rotary Knob
- 12 Dust Cover
- 13 LTE Div
- 14 GNSS
- 15 LTE Main
- 16 RJ50 Connector
- 17 RAM Ball Mounting
- 18 12 V Power Connector
- 19 Trunnion Mounting Point



- 20 Internal TETRA SIM Card Slot
- 21 TETRA UHF Connector C
- 22 12 V Power Connector
- 23 26-Pin Accessory Connector
- 24 RJ50 Connector (for Control Head)
- 25 RJ50 Connector (for External TETRA SIM Reader)
- 26 RS232 (9 SubD)

### Looking After Your Radio

Never leave your control head in extreme temperatures (over +85 °C), such as behind a windscreen in direct sunlight.

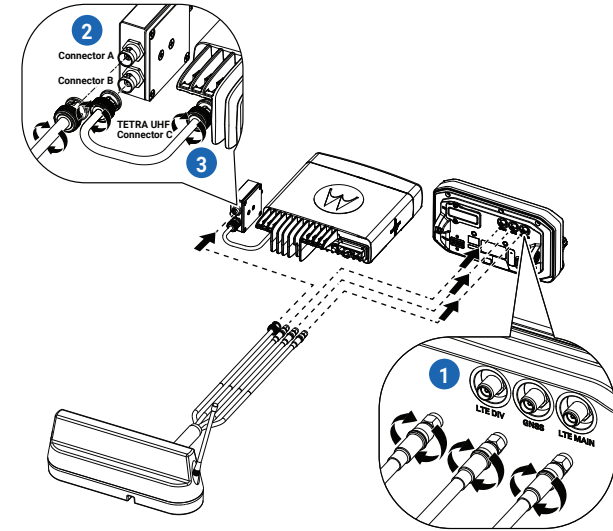
The control head is protected against dust and water sprays (compliant with the IP54 rating).

To clean your radio, use a moistened or antistatic cloth.

Ensure the gore port membrane on the back of the control head, labeled **VENT**, is kept clean.

### Attaching the Antenna

1. Connect the LTE Main, LTE DIV, and GNSS cables of the external antenna to the control head. Turn the connector sleeve on each cable to lock the cables to the control head.
2. Connect the TETRA cable of the external antenna to the Low Pass Filter (LPF) connector A or B.
3. Connect a coaxial cable from LPF connector A or B to the transceiver TETRA UHF Connector C.
4. Turn the connector head of the cable to lock the cable to the LPF and transceiver.



### Getting Started

www.motorolasolutions.com

More Information on Your Radio

Visit the Motorola Solutions Web site at:  
<https://www.motorolasolutions.com/>

Learning Experience Portal

User documentation available at:  
<https://learning.motorolasolutions.com/>

Open Source Software Legal Notices

Available in Integrated Terminal Management (iTM)



This document is copyright protected. Duplications for the purpose of the use of Motorola Solutions products are permitted to an appropriate extent. Duplications for other purposes, changes, additions or other processing of this document are not permitted. Only this electronically-saved document is considered to be the original. Duplications are considered merely copies. Motorola Solutions, Inc., and its subsidiaries and affiliates do not vouch for the correctness of such kinds of copies.

MOTOROLA, MOTO, MOTOROLA SOLUTIONS and the Stylized M Logo are trademarks or registered trademarks of Motorola Trademark Holdings, LLC and are used under license. The Bluetooth® word mark and logos are registered trademarks owned by the Bluetooth SIG, Inc. and are used under license. All other trademarks are the property of their respective owners.

© 2024 Motorola Solutions, Inc. All rights reserved.



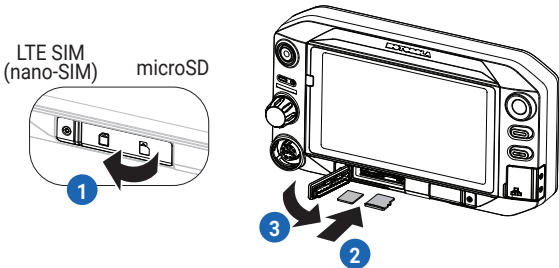
MN010800A01-AA



Printed in

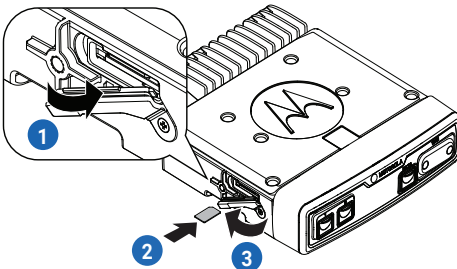
Inserting the LTE SIM and microSD Cards

1. Open the card holder door on the control head.
2. Insert the LTE SIM or microSD card into the correct slot. Ensure that the gold contact area is facing downwards.
3. Close the card holder door.



Inserting the TETRA SIM card

1. Open the TETRA SIM card holder door on the transceiver.
2. Insert the TETRA SIM card into the card slot. Ensure that the gold contact area is facing downwards.
3. Close the TETRA SIM card holder door.

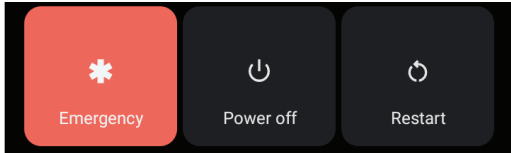


Turning Your Radio On

1. Press and hold the Power button for three seconds to turn on your radio.

Turning Your Radio Off

1. Press and hold the Power button.
2. Tap Power off icon to turn off your radio.



TETRA Transmit and Receive Indicator

Call State	Lightbar Color	Lightbar Indicator	
		Group Call	Broadcast Call
Available or Idle	Gray or light blue	◀ H DMO Folder DMO1	◀ H DMO Folder DMO1
Receiving	Amber	◀ H DMO Folder DMO1 905	L ◀ Broadcast Emergency Call 905
Receiving hangtime	Amber	◀ H DMO Folder DMO1	L ◀ Broadcast Emergency Call
Transmitting	Green	◀ H DMO Folder DMO1 Talking	Not applicable
Transmitting hangtime	Green	◀ H DMO Folder DMO1	Not applicable

LTE LED and TETRA LED Status Indication

Indication	LTE LED	TETRA LED
Solid green	Not applicable	• In use • Repeating call
Blinking green	Not applicable	• TMO service idle • Switching modes TMO to DMO
Solid red	Not applicable	Out of service
Blinking red	Not applicable	• Connecting to a network • Switching modes from DMO to TMO
Solid orange	Not applicable	• Radio is turning on • Transmit inhibit mode in service • Channel busy in DMO • Radio interference in DMO
Blinking orange	Not applicable	Incoming private
Blinking blue	• New app notification • New SMS/MMS • New email • Missed call	Not applicable
No indication	• No new notification • Radio powered off	Radio is turned off